

FAQs

- Q. Does ENVIE work on virgin hair? (Hair that has never been exposed to any chemical treatment).**
A. Yes, ENVIE will straighten virgin hair. However, the first application's duration of action will not be as long as for hair that has been previously treated by some other type of chemical process. Upon a second application, the hair will have a longer duration of action.
- Q. Approximately how long will my hair stay straight?**
A. Each hair type will have a little different length of time that the hair will stay straight for. For hair types that are loose and wavy, the duration of action may be greater than 90 days. If the hair curl is tighter, the duration of action may be less than 90 days.
- Q. How often can I use the ENVIE Straightening System?**
A. We recommend that you wait at least 4 weeks before repeating the use of the ENVIE Hair Straightening System.
- Q. Can ENVIE System be used after other straightening procedures?**
A. Yes, you can use the ENVIE system over any type of straightening agent. Our recommendation is to wait a minimum of 4 weeks from last procedure before using the ENVIE Hair Straightening System.
- Q. If I have previously color treated hair, can I use the ENVIE System and not damage my hair?**
A. Yes, you can use the ENVIE System on color treated hair! For best color results, it is suggested that you use the ENVIE Hair Straightening System first then wait for 2 weeks before you have your hair colored.
- Q. Should I expect my hair to be super straight?**
A. The ENVIE Hair Straightening System will give your hair a smooth appearance but your hair will not be pin straight in appearance.
- Q. Can the ENVIE Straightening System be done on children?**
A. We recommend the ENVIE System be used on women and men 18 years of age and older.

- Q. Is it best to use the ENVIE Straightening System before or after coloring?**
A. For optimal results, we suggest you use the ENVIE Straightening system first, then wait 2 weeks before having a color/highlighting process.
- Q. Can I wash my hair right after treatment?**
A. No, please wait 6-8 hours before washing hair after the ENVIE application. During this time, the active ingredients penetrate into the hair to break the disulfide bonds that contribute to curly hair.
- Q. Can I clip or pull back my hair during the initial 6-8 hours after completing?**
A. For best results, let the hair hang loose, brush it into the position or style you prefer, and let the active ingredients work on breaking the disulfide bonds during this period. After the 6-8 hours wait and first washing, you can wear your hair any way you wish.
- Q. What should I do if my hair gets damp or wet from water or sweat during the first 6 - 8 hours after the application? For example, sweat from exercise or being caught in a rain storm?**
A. Immediately blow dry hair using your paddle or roller brush, and then use your flat iron to reseat in the active ingredients.
- Q. Can I use styling products on my hair during the first 6-8 hours?**
A. No, styling products should not be used on the hair for the first time only 6-8 hours after the ENVIE System has been applied. The only styling products we suggest that you consider using are a thermal protectant or styling oil during the last steps of the blow dry and flat iron process.
- Q. Can I get the treatment done while pregnant or nursing?**
A. While there are no known adverse effects, we do not recommend women who are nursing or are pregnant to have any chemical process done to their hair without a doctor's permission.
- Q. Will I still need to flat iron my hair each day after using ENVIE?**
A. After each wash, you may need to quickly flat iron your hair for best results, but it should take you substantially less time than what was normally required prior to using ENVIE.

BEFORE

AFTER



ONE TREATMENT OF ENVIE

60-Day Guarantee

If you are not completely happy with your ENVIE Hair Straightening System, please contact customer service at 857-263-8683 or email us at service@enviehaircare.com within 60 days of receipt of your order. Please request a return authorization to return containers, even if they are empty. Customers are responsible for return postage.

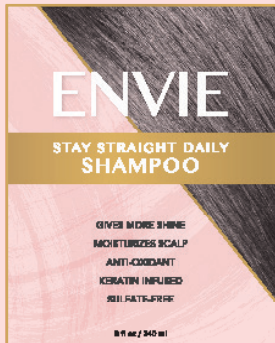
Also Available:

ENVIE Stay Straight Daily Shampoo and Conditioner

The ENVIE Stay Straight Daily Shampoo and Conditioner are formulated to extend the duration of the ENVIE Straightening System. The product gives hair more shine, prevents hair damage, keeps scalp healthy, and restores luster to hair. The shampoo and conditioner are ideal for all types of treated hair.

Visit enviehaircare.com for more information

Made in USA



ENVIEHAIRCARE.COM

ENVIE™

Hair Straightening System

INSTRUCTION GUIDE

Specially formulated, single application treatment, using patented ingredients that eliminate curls and frizz for up to 90 days while giving hair a softer, shinier and healthier appearance.

Please read entire instructions guide before beginning process.

Tools needed for the process:
Blow dryer, flat iron, roller or paddle brush, wide tooth comb, towels, small bowl, hair coloring brush, and hair clips.

DIRECTIONS

1. **Wash hair twice using Step One: ENVIE Clarifying Shampoo.** Rinse thoroughly and minimally towel dry so hair is not dripping wet. Hair should be damp but not wet. Brush or comb out hair after towel drying.
2. **Apply Step Two: ENVIE Straightening Agent.**
Pour contents of Straightening Agent bottle into a small bowl. Starting at the bottom back of head, part hair using wide tooth comb 1"-2" depending on hair thickness. Use hair clip to hold additional hair out of way. Using coloring brush, brush on Straightening Agent from root to tip. After applying, comb the section several times to evenly apply the Straightening Agent throughout section of hair. After combing, move to the next section and continue this process until the Straightening Agent has been applied to entire head of hair.



3. **Wait 20 minutes before moving to the next step (Do not rinse out the straightening agent).** During the waiting process, approximately every 5–6 minutes, run the wide tooth comb through the hair to make sure you have evenly distributed all the Straightening Agent throughout the hair.
4. **Blow dry hair (Do not rinse the ENVIE Straightening Agent out of hair).** Dry the hair as much as possible using a roller or paddle brush. The hair will feel heavy and damp.



5. **Flat iron hair taking small sections of the hair at a time** (about the width of a quarter). After flat ironing each section, brush that section of hair.



6. **Wait 20 minutes before moving to next step.**
7. **Wash hair thoroughly with Step Three: ENVIE Post Treatment Shampoo and rinse hair thoroughly.**
8. **Apply Step Four: ENVIE Post Treatment Conditioner** (Let set in hair for 3–5 minutes before rinsing out). Rinse out conditioner and then remove all excess water from hair by towel drying.
9. **Blow dry hair using a roller brush or paddle brush.** You may wish to apply a thermal protectant for the final two steps.
10. **Flat iron the hair.**

Entire process should take between 1.5-2 hours depending on hair length.

For best results, keep hair dry for approximately 6-8 hours before washing again. During initial 6-8 hours let hair hang loose, do not clip or pull back.

Results may vary based on hair type. Hair that has not been chemically treated in the past, virgin hair, may not achieve maximum results until second treatment. It is recommended to wait 4 weeks before applying the ENVIE Hair Straightening System again.

Do not ingest ENVIE products. If content comes in contact with eyes, flush with warm water.

ENVIE CARE AND MAINTENANCE

In order to give you the longest duration of action (number of days with straight frizz free hair), we recommend a few simple suggestions and things to consider:

1. During the application of the ENVIE Hair Straightening System, it is important to make sure that you are able to **spread the Step 2: ENVIE Straightening Agent evenly throughout the entire hair making sure that all your hair is exposed to the straightening agent.** For best results, keep your hair extremely damp during the application process. If necessary, wet the untreated hair with water, either by spraying or running a wet brush through it before applying Step 2: Straightening Agent.
2. **Please follow the directions as closely as possible.**
To obtain the best results, please adhere to the 20 minute wait times outlined in the directions during the application process. The wait time is critical for the active ingredients to penetrate deep into the hair shaft.
3. **Frequent exposure of hair to salt water pools, swimming pools with high chlorine levels, or swimming in the ocean may leach the active ingredients out of the hair shaft.**
4. **The more frequently the hair is washed (post application) with a shampoo or conditioner that contains a high pH level, the more rapidly the active ingredients will wash out of the hair shaft.** We recommend the ENVIE Stay Straight Shampoo and Conditioner, which has been developed to be used with our system to maximize results.

EVERYDAY STYLING

With the ENVIE Hair Straightening System, you now have the ability to style your hair from straight to controlled curl. Here are a few suggestions on what you can accomplish after washing and conditioning hair.

For a **tight looking ringlet curl**, use a hot curling iron for styling.

For a **loose curl**, blow dry hair and use hot curling rollers for loose wavy curls.

For a **larger curl**, roll your hair in large round hair rollers, and blow dry with rollers in hair to achieve a large loose curl.

To better accomplish your desired curl pattern, it may be necessary to use a styling gel or mousse. The curl is temporary and will fade naturally, or can be washed out during your next shampoo.